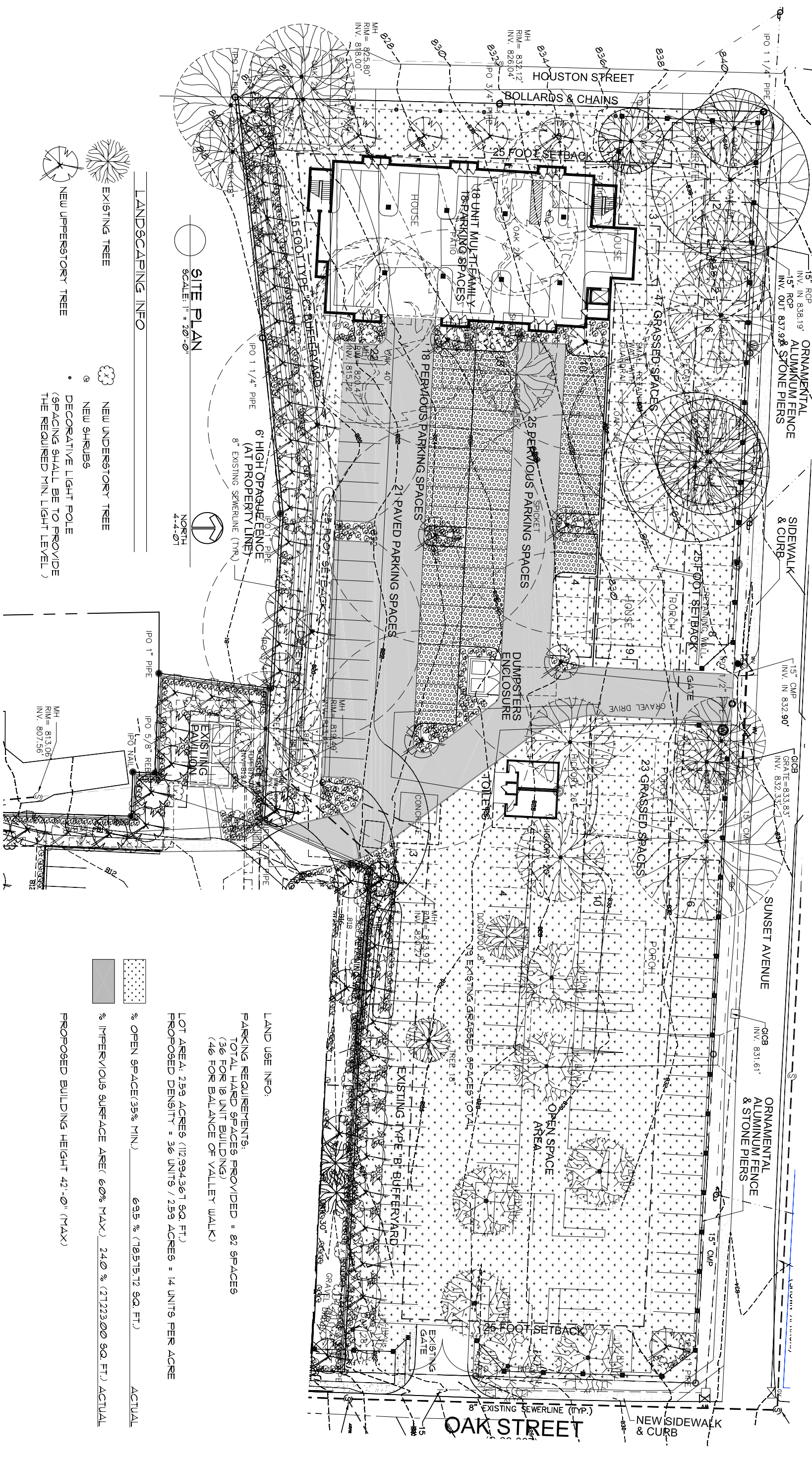


# SUNSET AT VALLEY WALK

Clemson, South Carolina



**SITE PLAN**  
SCALE: 1" = 20'-0"

LANDSCAPING INFO

- EXISTING TREE
- NEW UPPERSTORY TREE
- NEW UNDERSTORY TREE
- NEW SHRUBS
- DECORATIVE LIGHT POLE (SPACING SHALL BE TO PROVIDE THE REQUIRED MIN. LIGHT LEVEL)

**LAND USE INFO:**

**PARKING REQUIREMENTS:**  
TOTAL HARD SPACES PROVIDED = 82 SPACES  
(36 FOR 18 UNIT BUILDING)  
(46 FOR BALANCE OF VALLEY WALK)

LOT AREA: 259 ACRES (112,994,367 SQ. FT.)  
PROPOSED DENSITY = 36 UNITS / 259 ACRES = 14 UNITS PER ACRE

	% OPEN SPACE (35% MIN.)	69.5% (18,575,712 SQ. FT.)	ACTUAL
	% IMPERVIOUS SURFACE AREA (60% MAX.)	24.0% (27,223,000 SQ. FT.)	ACTUAL
	PROPOSED BUILDING HEIGHT 42'-0" (MAX)		